

PLANTA BAIXA - 3º PAVIMENTO/COBERTURA
ESCALA 1/100

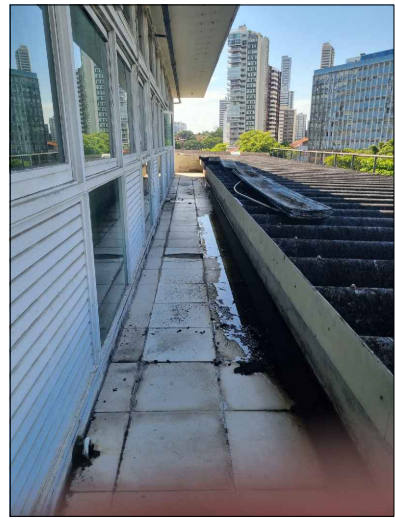


FOTO 11



FOTO 12

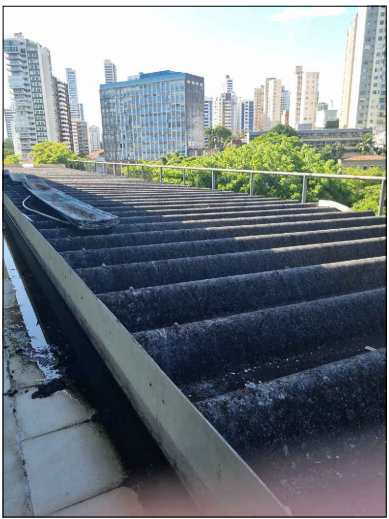


FOTO 13



FOTO 14

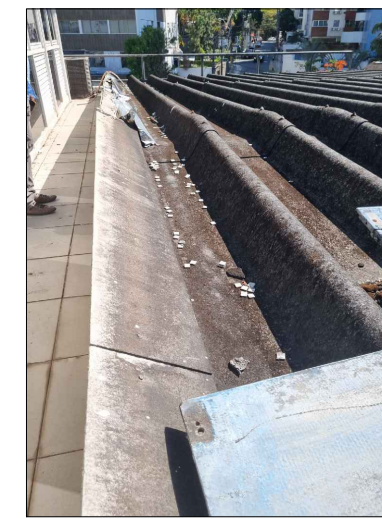


FOTO 15

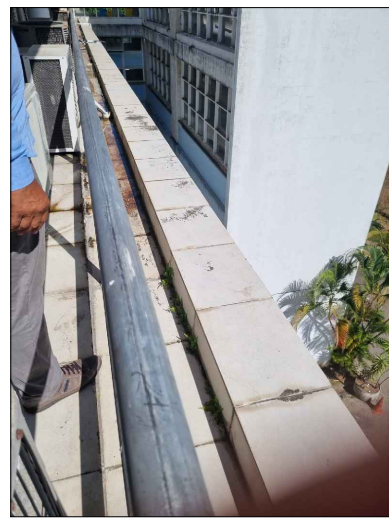


FOTO 16

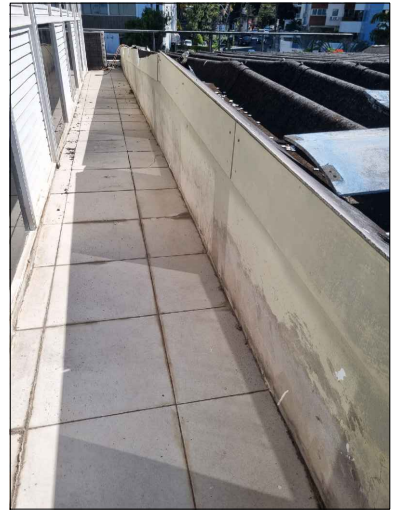


FOTO 17

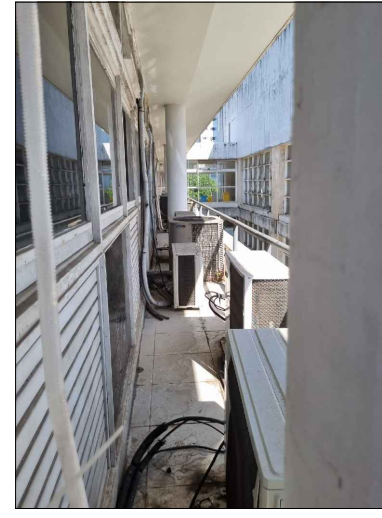


FOTO 18

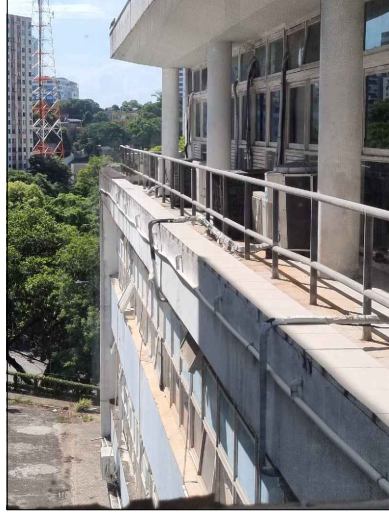


FOTO 19

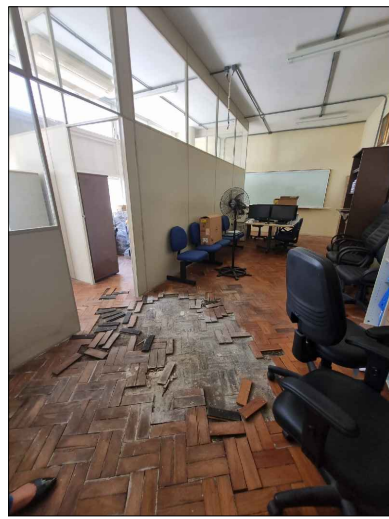


FOTO 01



FOTO 02

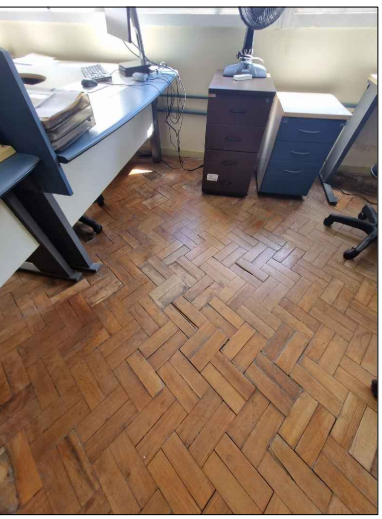


FOTO 03



FOTO 04



FOTO 05

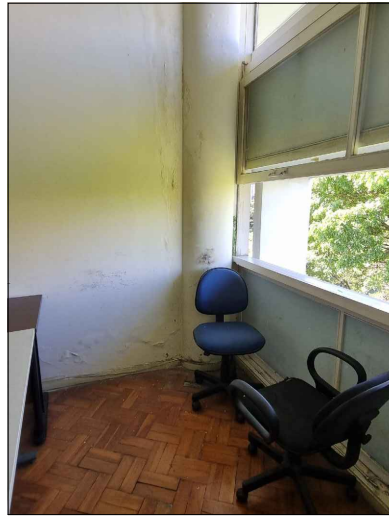


FOTO 06



FOTO 07

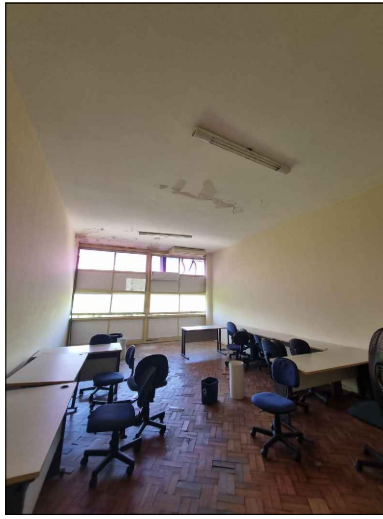


FOTO 08

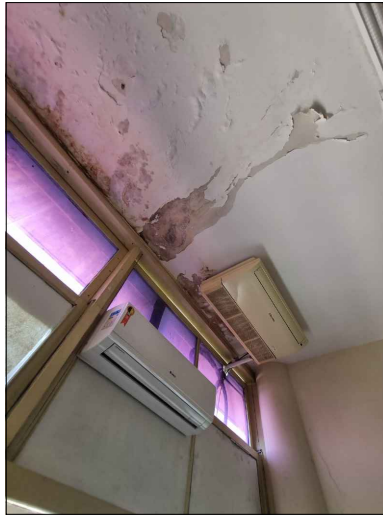


FOTO 09

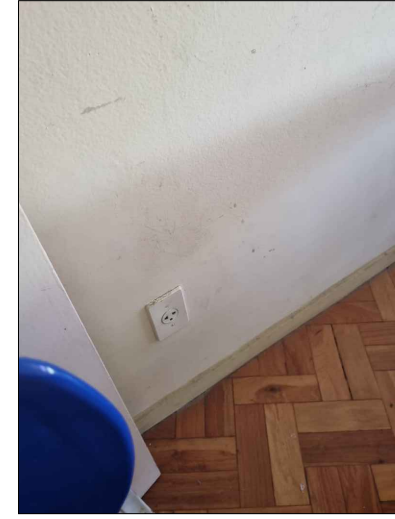




FOTO 10

COORDENADOR: ARQ. NAIÁ ALBAN CAU-A111323-2			
CHEFE DE PROJETOS: ARQ. BRUNO SANTANA CAU A400165			
RESPONSÁVEL TÉCNICO:			
			
COORDENADOR DE PROJETO: - ARQ. NAIÁ ALBAN CAU-A111323-2			
CHEFE DO NÚCLEO DE PROJETOS: - ARQ. BRUNO SANTANA CAU-A400165			
RESPONSÁVEL TÉCNICO: -			
NOME DO PROJETO:			
FACULDADE DE DIREITO - 2º/3º PAVIMENTOS			
LOCAL: CAMPUS ONDINA		CIDADE: SALVADOR	
INDICAÇÃO FOTOGRÁFICA SITUAÇÃO EXISTENTE		REVISÃO	
ÁREA TÉCNICA: ARQUITETURA		ETAPA: EXECUTIVO	
DATA: DEZ/23		DESENHISTA: MARCIA PINHEIRO	